

PRINTABLE GAMES FOR YOUR NEXT CAR TRIP!

# ROAD GAMES



Print out these games for your next car trip.

This kit includes:

**FIND THE FAKES, SEARCH THE SCENE  
RACER MATCH & CAR BINGO**



AVAILABLE ON



**NOVEMBER 1**

© 2011 Disney / Pixar. All rights reserved.





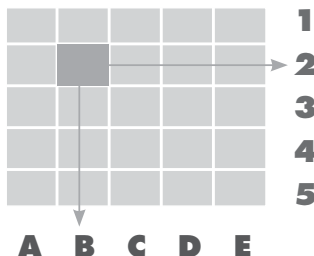


# SPOT THE SCENE

Just as roadmaps use a grid system to help you find your location, see if you can map-out the scene pieces below.

## STEP 1»

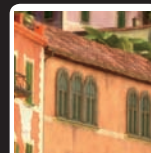
Spot each of the picture pieces in the grid below.



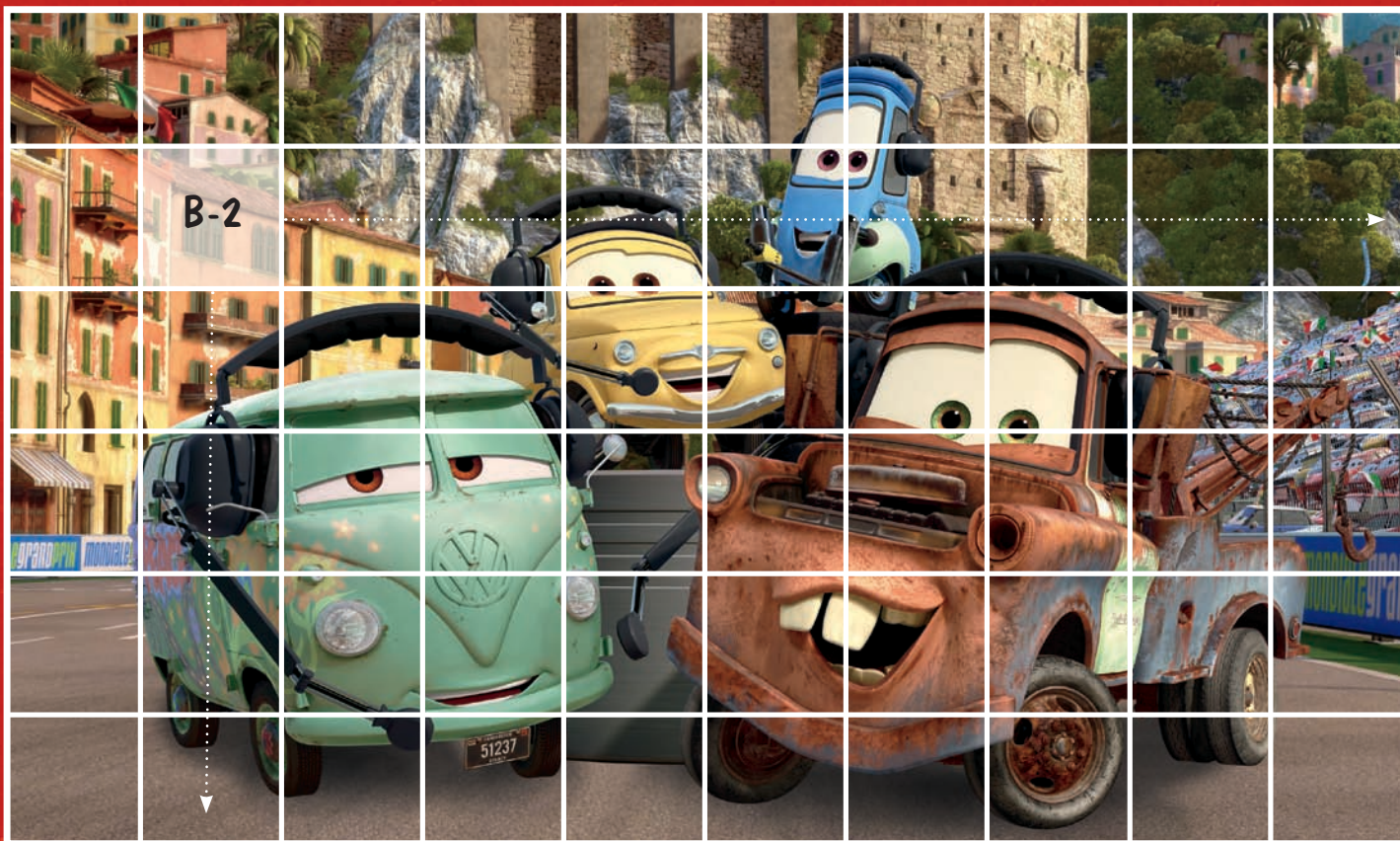
## STEP 2»

Mark the location of your piece on the grid by calculating the longitude letter and the latitude number for each piece.

### EXAMPLE

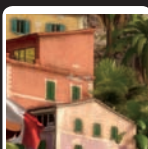


B-2

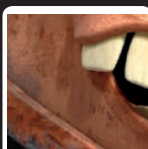


ANSWERS: 1) B-1 2) F-5 3) H-1 4) C-5 5) H-3 6) F-2

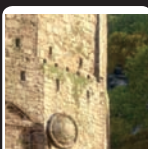
### IMAGE 1



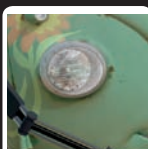
### IMAGE 2



### IMAGE 3



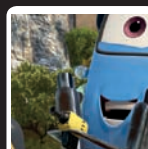
### IMAGE 4



### IMAGE 5



### IMAGE 6



AVAILABLE ON



NOVEMBER 1





# FIND THE FAKES

Four of the street signs below are not real, can you identify which ones they are? Circle your answers, then check to see if you are right!



REAL FAKE



REAL FAKE



REAL FAKE



REAL FAKE



REAL FAKE



REAL FAKE



REAL FAKE



REAL FAKE



REAL FAKE



REAL FAKE



REAL FAKE



REAL FAKE

Answers: 1- Right Way should be Wrong Way. 2- Fast Area should be Rest Area. 3- ZZ Crossing should be RR Crossing. 4- Stop light ahead sign should have a yellow light.

AVAILABLE ON



**NOVEMBER 1**

© 2011 Disney / Pixar. All rights reserved.





# RACER MATCH



IDENTIFY THE RACERS! See if you can match each race-car with its silhouette.



Raoul ÇaRoule



Francesco Bernoulli



Shu Todoroki



Lightning McQueen



Rip Clutchgoneski



Carla Veloso



Miguel Camino



Jeff Gorvette



Nigel Gearsley



ANSWERS: 1- Carla Veloso 2- Raoul ÇaRoule 3- Francesco Bernoulli 4- Shu Todoroki 5- Jeff Gorvette 6- Miguel Camino 7- Nigel Gearsley 8- Lightning McQueen 9- Rip Clutchgoneski

AVAILABLE ON



NOVEMBER 1





# CAR BINGO

## How To Play:

- 1) Each person gets a different Car Bingo page (up to four may play).
- 2) While on the road look around you to find the different objects on your bingo card.
- 3) When you find a match, cross it off your card.
- 4) The first person to find five items in a row (vertically, horizontally or diagonally) calls out "BINGO" to WIN!



AVAILABLE ON



NOVEMBER 1

© 2011 Disney / Pixar. All rights reserved.





# CAR BINGO

## How To Play:

- 1) Each person gets a different Car Bingo page (up to four may play).
- 2) While on the road look around you to find the different objects on your bingo card.
- 3) When you find a match, cross it off your card.
- 4) The first person to find five items in a row (vertically, horizontally or diagonally) calls out "BINGO" to WIN!

SUV 	WRONG WAY 		BLUE SPORTS CAR 	SLOWER TRAFFIC KEEP RIGHT 
	DO NOT ENTER 	KEEP RIGHT 	POLICE CAR 	
	GREEN SPORTS CAR 	STOP 	NO PARKING TOW AWAY ZONE 	OLD SEDAN 
FUEL STOP AHEAD 	TOW TRUCK 	RIGHT LANE ENDS 	VW BUS 	REST AREA 
FREE SPACE 	SPEED LIMIT 65 		MACK TRUCK 	DETOUR 



AVAILABLE ON



NOVEMBER 1

© 2011 Disney / Pixar. All rights reserved.







# CAR BINGO

## How To Play:

- 1) Each person gets a different Car Bingo page (up to four may play).
- 2) While on the road look around you to find the different objects on your bingo card.
- 3) When you find a match, cross it off your card.
- 4) The first person to find five items in a row (vertically, horizontally or diagonally) calls out "BINGO" to WIN!

**NO  
PARKING  
TOW AWAY  
ZONE**



**WRONG  
WAY**



**YIELD**

**DO NOT  
ENTER**



**VW BUS**



**TOW TRUCK**



**OLD SEDAN**



**SPEED  
LIMIT  
65**

**BLUE  
SPORTS CAR**



**REST  
AREA**

**POLICE CAR**



**SLOWER  
TRAFFIC  
KEEP RIGHT**



**DETOUR**

**FREE  
SPACE**

**KEEP  
RIGHT**



**GREEN  
SPORTS CAR**



**MACK TRUCK**



**FUEL STOP  
AHEAD**



**AVAILABLE ON**



**NOVEMBER 1**

© 2011 Disney / Pixar. All rights reserved.





# CAR BINGO

## How To Play:

- 1) Each person gets a different Car Bingo page (up to four may play).
- 2) While on the road look around you to find the different objects on your bingo card.
- 3) When you find a match, cross it off your card.
- 4) The first person to find five items in a row (vertically, horizontally or diagonally) calls out "BINGO" to WIN!

**POLICE CAR**



**SPEED  
LIMIT  
65**

**RIGHT  
LANE  
ENDS**

**DO NOT  
ENTER**

**GREEN  
SPORTS CAR**



**YIELD**

**NO  
PARKING  
TOW AWAY  
ZONE**

**SUV**



**FUEL STOP  
AHEAD**

**VW BUS**



**FREE  
SPACE**

**REST  
AREA**

**DETOUR**

**BLUE  
SPORTS CAR**



**SLOWER  
TRAFFIC  
KEEP RIGHT**



**OLD SEDAN**



**KEEP  
RIGHT**



**TOW TRUCK**



**MACK TRUCK**



**WRONG  
WAY**



**AVAILABLE ON**



**NOVEMBER 1**

© 2011 Disney / Pixar. All rights reserved.

