

MAINTENANCE ACTIVITIES

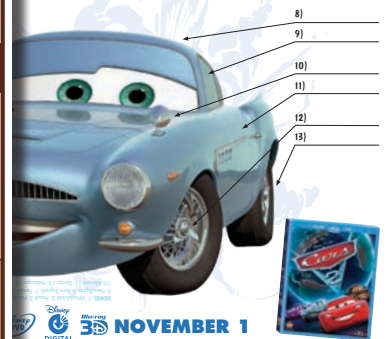
Helpful tips for understanding and maintaining your family car!



FINN McMISSILE'S PIT-STOP CHECKLIST

Check your pit-stop skills by filling in the correct parts of Finn McMissile!

- | | | | |
|----------------------------------|--|---------------------------------------|--|
| <input type="checkbox"/> TIRES | <input type="checkbox"/> HOOD ORNAMENT | <input type="checkbox"/> HUBCAPS | <input checked="" type="checkbox"/> WINDSHIELD |
| <input type="checkbox"/> DOORS | <input type="checkbox"/> HEADLIGHTS | <input type="checkbox"/> TURN SIGNALS | |
| <input type="checkbox"/> MIRRORS | <input type="checkbox"/> WINDOWS | <input type="checkbox"/> GRILL | |



SHIFT INTO GEAR WITH HOLLEY SHIFTWELL'S INDICATOR CHALLENGE

Dashboard symbols indicate how your car is running! See if you can match the right indicator symbol with its function.

DASHBOARD INDICATORS:

1	2	3	4	5
6	7	8	9	10
11	12	13		

☐ Fuel ☐ Rear Defrost
☐ Temperature ☐ Door Ajar
☐ Parking Brake ☐ Hazard
☐ Check Oil

AVAILABLE NOVEMBER 1

LIGHTNING McQUEEN GET THE MOST OUT OF YOUR CAR

The images below represent gauges. Look at each gauge and see if you can match it to its function.

SPEEDOMETER - Indicates the speed your car is traveling.

FUEL GAUGE - Indicates the amount of fuel in your gas tank.

ODOMETER - Indicates total miles on the engine.

DISTANCE - Measures current distance traveled.

ESTIMATE YOUR GAS MILEAGE:

- Fill your car with gas. Write down the odometer reading before leaving the gas station.
- When you have used all the gas, write down the new odometer reading (odometer reading 2). Then refuel and write down the number of gallons it takes to refill your tank.
- From odometer reading 2 subtract odometer reading 1 to calculate the miles driven.
- Divide the distance driven by the total gallons of gas it took to fill the tank the second time. That's your gas mileage!

ODOMETER READING 1 - ODOMETER READING 2 = MILES DRIVEN
 MILES DRIVEN ÷ GALLONS TO FILL TANK = MILES PER GALLON

AVAILABLE ON NOVEMBER 1

CAR CARE CHECKLIST

Every car needs good care for it to drive at it's best! Use this handy checklist to help your parents care for your family's car.

YOUR CHECKLIST!

- ☐ **WINDOWS & MIRRORS** - Clean all windows inside and out making sure the front windshield is as clean as possible. Clean all mirrors CAREFULLY making sure not to move their position.
- ☐ **WINDSHIELD WIPERS** - Check and clean all windshield wipers (front and back). If they are cracked or damaged they should be replaced right away.
- ☐ **VENTILATION** - Remove any leaves or debris from the front grill and below the windshield wipers.
- ☐ **TIRES** - Check tire pressure and treads. See penny trick below.
- ☐ **LIGHT CHECK** - Help the driver test the lights listed below to see if they are working properly:
 - ☐ Headlights
 - ☐ High Beams
 - ☐ Brake Lights
- ☐ **INSIDE THE CAR** - Test the following:
 - ☐ Dome light (overhead)
 - ☐ Dashboard lights
 - ☐ Passenger lights
 - ☐ Trunk light
- ☐ **CLEAN INTERIOR** - Remove all debris from inside the car. Make sure the driver-side floor is completely clear.
- ☐ **INSPECT TRUNK** - Make sure your trunk is clean and orderly. Remove all unnecessary items. Make sure you have a good spare tire and an emergency roadside kit.
- ☐ **INSPECT GARAGE/DRIVEWAY** - Check to see if any liquids are dripping under the car. Make sure the driveway, garage or parking space is free of debris.

REMINI MOM OR DAD TO:

- Check all fluids regularly.
- Change oil and all filters according to their parent's manual schedule.
- Replace broken lights.
- Make sure their driver's license, registration, and insurance are current and on hand.
- DRIVE SAFE!

IS IT TIME TO REPLACE YOUR TIRES? TRY THIS:

Tire tread (penny trick)

When the car is parked and the engine is off, place a penny head-first into your tires' tread. If you can see the very top of Lincoln's head or the copper above it, it is time to replace your tires!

REPLACE YOUR TIRES!

AVAILABLE ON NOVEMBER 1



AVAILABLE ON **NOVEMBER 1**



FINN McMISSILE'S PIT-STOP CHECKLIST

Check your pit-stop skills by filling in the correct parts of Finn McMissile!

- | | | | |
|---------------------------------|--|-------------------------------------|--|
| <input type="checkbox"/> TIRES | <input type="checkbox"/> HOOD ORNAMENT | <input type="checkbox"/> HUBCAPS | <input checked="" type="checkbox"/> WINDSHIELD |
| <input type="checkbox"/> HOOD | <input type="checkbox"/> DOORS | <input type="checkbox"/> HEADLIGHTS | <input type="checkbox"/> TURN SIGNALS |
| <input type="checkbox"/> ROOF | <input type="checkbox"/> MIRRORS | <input type="checkbox"/> WINDOWS | <input type="checkbox"/> GRILL |
| <input type="checkbox"/> FENDER | | | |



ANSWERS: 1- Windshield 2- Hood 3- Hood Ornament 4- Grill
5- Headlights 6- Turn Signals 7- Fender 8- Roof 9- Windows
10- Mirrors 11- Doors 12- Hubcaps 13- Tires

AVAILABLE ON



NOVEMBER 1



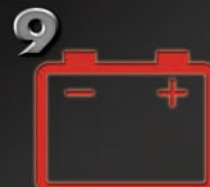
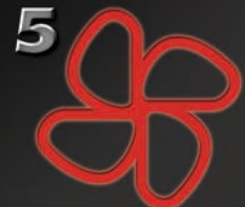


SHIFT INTO GEAR WITH HOLLEY SHIFTWELL'S

INDICATOR CHALLENGE

Dashboard symbols indicate how your car is running!
See if you can match the right indicator symbol with its function.

DASHBOARD INDICATORS:



Fuel



Rear Defrost



Seat Belt



9 Battery



Temperature



Door Ajar



Bright Lights



Turn Signals



Parking Brake



Hazard



Front Defrost



AC Airflow



Check Oil



Fan

ANSWERS: 1- Hazard 2- Check Oil 3- Seat Belt 4- Bright Lights 5- Fan
6- Rear Defrost 7- Temperature 8- Fuel 9- Battery 10- Door Ajar
11- Parking Brake 12- Front Defrost 13- AC Airflow 14- Turn Signals

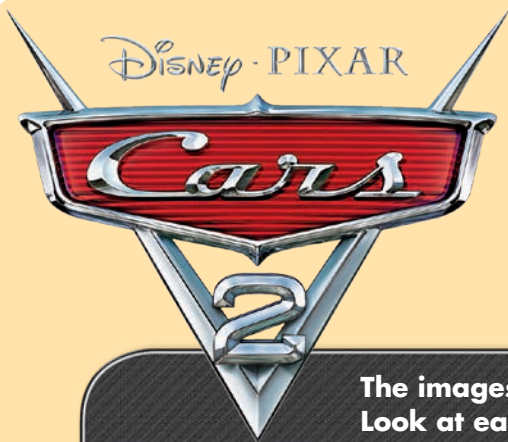
AVAILABLE ON



NOVEMBER 1

© 2011 Disney / Pixar. All rights reserved.





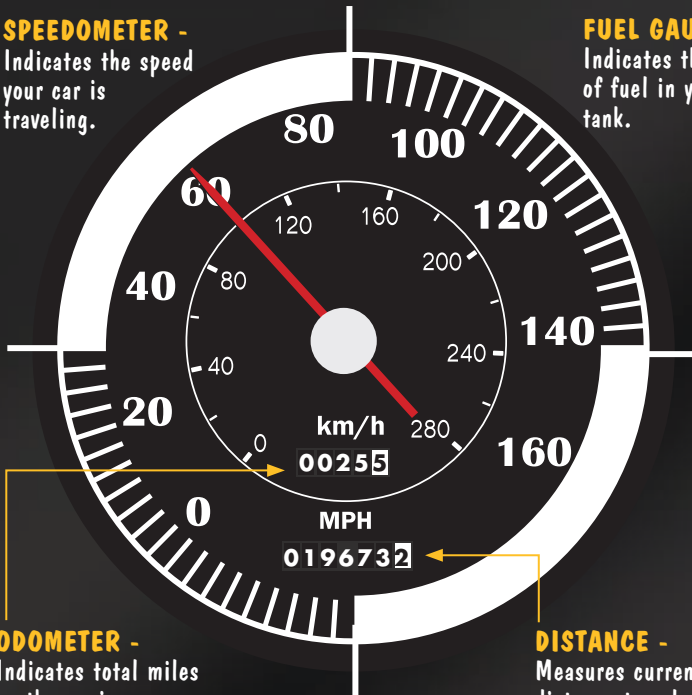
LIGHTNING McQUEEN'S

GETTING THE GAUGES

The images below represent gauges on a typical dashboard. Look at each gauge and see if you can find it in your family car.

SPEEDOMETER -

Indicates the speed your car is traveling.



ODOMETER -

Indicates total miles on the engine.

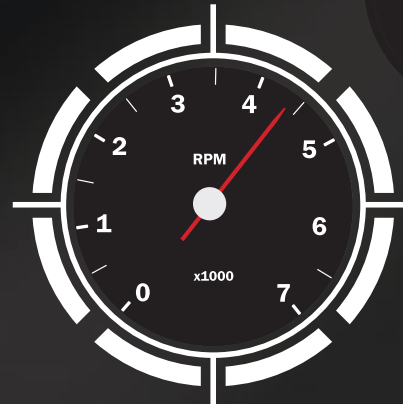
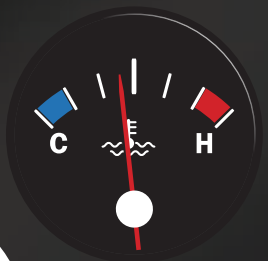
FUEL GAUGE -

Indicates the amount of fuel in your gas tank.



TEMPERATURE GAUGE -

Indicates the temperature of the engine



TACHOMETER -

An instrument that measures the speed of an engine. RPM stands for revolutions per minute.

ESTIMATE YOUR GAS MILEAGE:

- 1 Fill your car with gas. Write down the odometer reading (odometer reading 1) before leaving the gas station.
- 2 When you have used all the gas, write down the new odometer reading (odometer reading 2). Then refuel and write down the number of gallons it takes to refill your tank.
- 3 From odometer reading 2 subtract odometer reading 1 to calculate the miles driven.
- 4 Divide the distance driven by the total gallons of gas it took to fill the tank the second time. That is your gas mileage!

ODOMETER
READING 2

ODOMETER
READING 1

MILES
DRIVEN

MILES
DRIVEN

GALLONS TO
FILL TANK

MILES PER
GALLON



AVAILABLE ON



Disney



DIGITAL



NOVEMBER 1





CAR CARE CHECKLIST



Every car needs good care for it to drive at it's best!
Use this handy checklist to help your parents care
for your family's car.

YOUR CHECKLIST!



BE SURE THE ENGINE IS OFF, THE CAR IS SAFELY PARKED AND A LICENSED DRIVER IS PRESENT BEFORE YOU START.

☐ WINDOWS & MIRRORS -

Clean all windows inside and out making sure the front windshield is as clean as possible.

Clean all mirrors CAREFULLY making sure not to move their position.

☐ WINDSHIELD WIPERS -

Check and clean all windshield wipers (front and back). If they are cracked or damaged they should be replaced right away.

☐ VENTILATION -

Remove any leaves or debris from the front grill and below the windshield wipers.

☐ TIRES -

Check tire pressure and treads.
See penny trick below.

☐ LIGHT CHECK -

Help the driver test the lights listed below to see if they are working properly:

☐ Headlights

☐ High Beams

☐ Brake Lights

Inside the car – Test the following:

☐ Dome light (overhead)

☐ Dashboard light

☐ Passenger lights

☐ Trunk light

☐ CLEAN INTERIOR -

Remove all debris from inside the car.
Make sure the driver-side floor is completely clear.

☐ INSPECT TRUNK -

Make sure your trunk is clean and orderly. Remove all unnecessary items. Make sure you have a good spare tire and an emergency roadside kit.

☐ INSPECT GARAGE/DRIVEWAY -

Check to see if any liquids are dripping under the car.

Make sure the driveway, garage or parking space is free of debris.

REMIND MOM OR DAD TO:

- ☐ Check all fluids regularly.
- ☐ Change oil and all filters according to their owner's manual schedule.
- ☐ Replace broken lights.
- ☐ Make sure their driver's license, registration, and insurance are current and on hand.
- ☐ DRIVE SAFE!

IS IT TIME TO REPLACE YOUR TIRES? TRY THIS:

Tire tread (penny trick)

When the car is parked and the engine is off, place a penny head-first into your tires' tread. If you can see the very top of Lincoln's head or the copper above it, it is time to replace your tires!



REPLACE YOUR TIRES!



AVAILABLE ON



NOVEMBER 1